

**1 HOUR GLOBAL TRANSLATIONS**  
[info@globaltranslations.co.nz](mailto:info@globaltranslations.co.nz)  
Mobile / WhatsApp: +64 22 096 2125  
Landline: +64 (6) 560 2232  
NZBN: 9429050045365



NZTA Approved



## NEW ZEALAND DRIVER LICENCE TRANSLATIONS FREQUENTLY ASKED QUESTIONS

- 1. What Languages do you translate?** We translate driver's licences from all languages and countries.
- 2. Are you NZTA Certified to translate driver's licences in New Zealand?** Yes, we are! only NZTA-certified translators in New Zealand are allowed to translate driver's licences.
- 3. What are your prices and turnaround times?** You may choose from one of the following 3 options:

### PRICE AND DELIVERY TIME CHART

# Licences / Delivery Time	2 - 3 DAYS	2 - 3 DAYS	24 HOURS	24 HOURS	1 HOUR**	1 HOUR**
1 Driver's Licence	\$62.00		\$76.00		\$92.00	
2 Driver's Licences	\$120.00	(\$60 each)	\$148.00	(\$74 each)	\$184.00	(\$92 each)
3+ Driver's Licences	\$174.00	(\$58 each)	\$216.00	(\$72 each)	\$276.00	(2 hours)

\* All prices are in \$NZD including tax

\*\* 1 hour translations are **Monday to Friday from 9:00 am to 3:00 pm and are subject to availability**. Please call Nura on +64 22 096 2125 to check availability. This service may also be available outside of these days and hours, on holidays and on weekends with an additional cost of \$10 NZD. Call now to enquire.

**Example 1:** You need a translation of two driver's licences and want a 2 – 3 day delivery of your translation. Total payment: \$120 NZD.

**Example 2:** You need a translation of one driver's licence and need it delivered in 24 hours. Total payment: \$76 NZD.

**Example 3:** You need an extra-urgent translation of one driver's licence delivered in 1 hour. Total payment: \$92 NZD.

- 4. Do you provide discounts for more than 1 driver's licence?** Certainly! Please refer to the chart above.
- 5. Can I do the translation of my driver's licence all online?** Absolutely yes! Just upload a **clear** scan or photo of the **front and back** of your driver's licence to our portal on [www.1hourglobaltranslations.co.nz](http://www.1hourglobaltranslations.co.nz) so we can use it to translate your document. You will receive the **certified** translation via e-mail in PDF format, which must be **printed in colour** when presented. You DO NOT need to come to the office to drop-off or pick-up the translation.
- 6. Is the PDF translation valid for car rentals and driver's licence conversions?** Yes, it is! You will need to print the translation in colour to present it. This also means that you do not need to pay for shipping and you will receive the translation faster.
- 7. Do I need to come to your office to drop-off and pick-up the translation?** No, everything can be done online.
- 8. Do I need the translation shipped or can I just print it?** The **certified** translation will be sent to your e-mail in PDF form; you will need to print it in colour to present it and to keep it with you together with your original licence. If you still wish to have the translation shipped to you, you can order it online for an additional \$15 NZD. The printed copy will also be certified and valid for car rentals and licence conversions.
- 9. What are your payment options?** You can pay via our website: [www.1hourglobaltranslations.co.nz](http://www.1hourglobaltranslations.co.nz)
  - Credit/ Debit card online payment: <https://buy.stripe.com/7sldTH1SLeqBfwQ004>
  - PayPal- Account Number: [info@globaltranslations.co.nz](mailto:info@globaltranslations.co.nz) (you can also pay from our website)

**1 HOUR GLOBAL TRANSLATIONS**

18 Brooklyn Heights Drive, Kelvin Grove, Palmerston North, 4414, New Zealand.

## 1 HOUR GLOBAL TRANSLATIONS

[info@globaltranslations.co.nz](mailto:info@globaltranslations.co.nz)

Mobile / WhatsApp: +64 22 096 2125

Landline: +64 (6) 560 2232

NZBN: 9429050045365



NZTA Approved



### 3. Bank Transfer:

Bank Name: Westpac

Account Number: 03-1391-0028223-02

Account Name: Nura Majzoub Sapir

Reference: Your name

### 4. Wire Transfer: BIC / SWIFT Code: WPACNZ2W

\* If you paid via Bank Transfer, please send the proof of payment to: [info@globaltranslations.co.nz](mailto:info@globaltranslations.co.nz)

## 10. What are the steps to get my driver's licence translated?

1. Upload a clear scan or photo of the **front and back** of your driver's licence to our website portal: [www.1hourglobaltranslations.co.nz](http://www.1hourglobaltranslations.co.nz) or e-mail [info@globaltranslations.co.nz](mailto:info@globaltranslations.co.nz)

2. Make payment of the driver's licence by choosing from one of the 3 price options.

3. Receive the PDF translation via e-mail and print it in colour to present it and if you paid for shipping, you can present the physical document that was sent to you. You must carry the translation of your driver's licence together with your original one while driving in New Zealand.

**11. Do I need to translate my driver's licence?** New Zealand requires all drivers in the country to have their licence in English.

**12. How long can I drive in New Zealand with my foreign driver's licence?** You are allowed to drive with a foreign licence for 12 months; after which you must convert your licence to a New Zealand one.

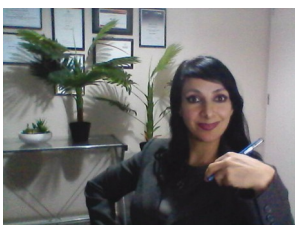
**13. What are your operating days and hours?** Monday – Sunday 8:00 am – 8:00 pm excluding Bahá'í Holy Days <https://www.bahai.org.nz/bahai-holy-days/> .

**14. Do I need my Driver's Licence translated before I can rent a car?** Yes. car rentals will require you to have the translation of your driver's licence in order to rent and drive the vehicle.

**15. Do you translate other documents too?** Yes, we translate all sorts of documents, such as Police Certificates, Birth, Marriage and Death Certificates, all immigration documents, school transcripts, and many more! Find out more at: [www.globaltranslations.co.nz](http://www.globaltranslations.co.nz)

**Any other questions?** Call Nura on +64 22 096 2125 and she will be more than happy to answer your questions!

Yours Truly,



Nura Majzoub Sapir, Manager of

**1 HOUR GLOBAL TRANSLATIONS**



Categories of vehicles		
CLASSING	ISSUED	EXPIRES
A	02-02-1999	02-11-2014
BI	12-06-2001	02-11-2014
B	18-03-2004	02-11-2014
CI	19-10-2010	02-11-2014
C	15-03-2011	02-11-2014
DI	18-03-2012	02-11-2014
D	28-03-2013	02-11-2018

0203458967 02/02/2012

**1 HOUR GLOBAL TRANSLATIONS**

18 Brooklyn Heights Drive, Kelvin Grove, Palmerston North, 4414, New Zealand.